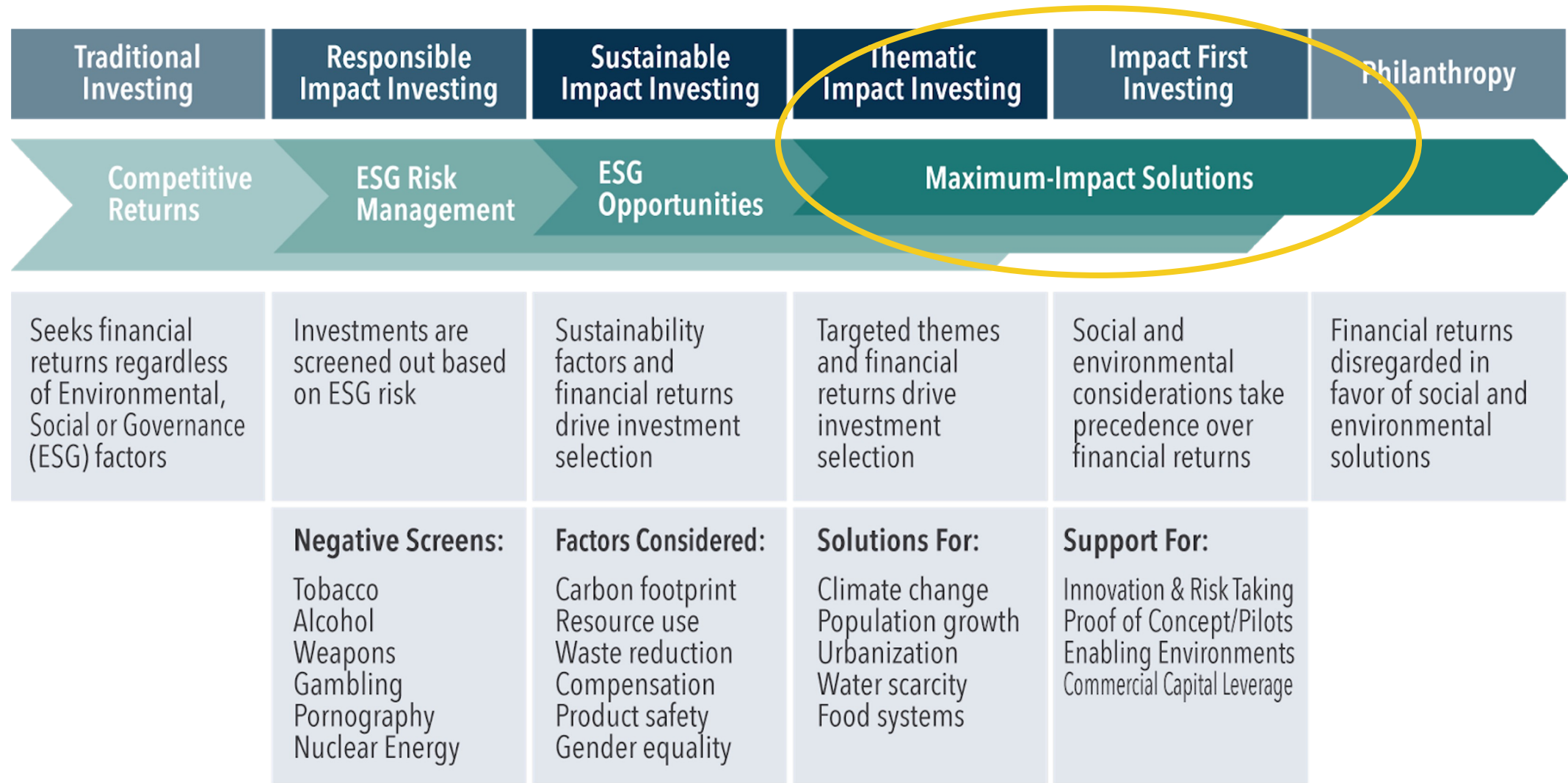


**Philanthropy has a
unique ability to carve
capital channels to
sustain the next
seven generations**

@MDFinanceSD



Unlocking a continuum of capital tools



Courtesy of Sonen Capital



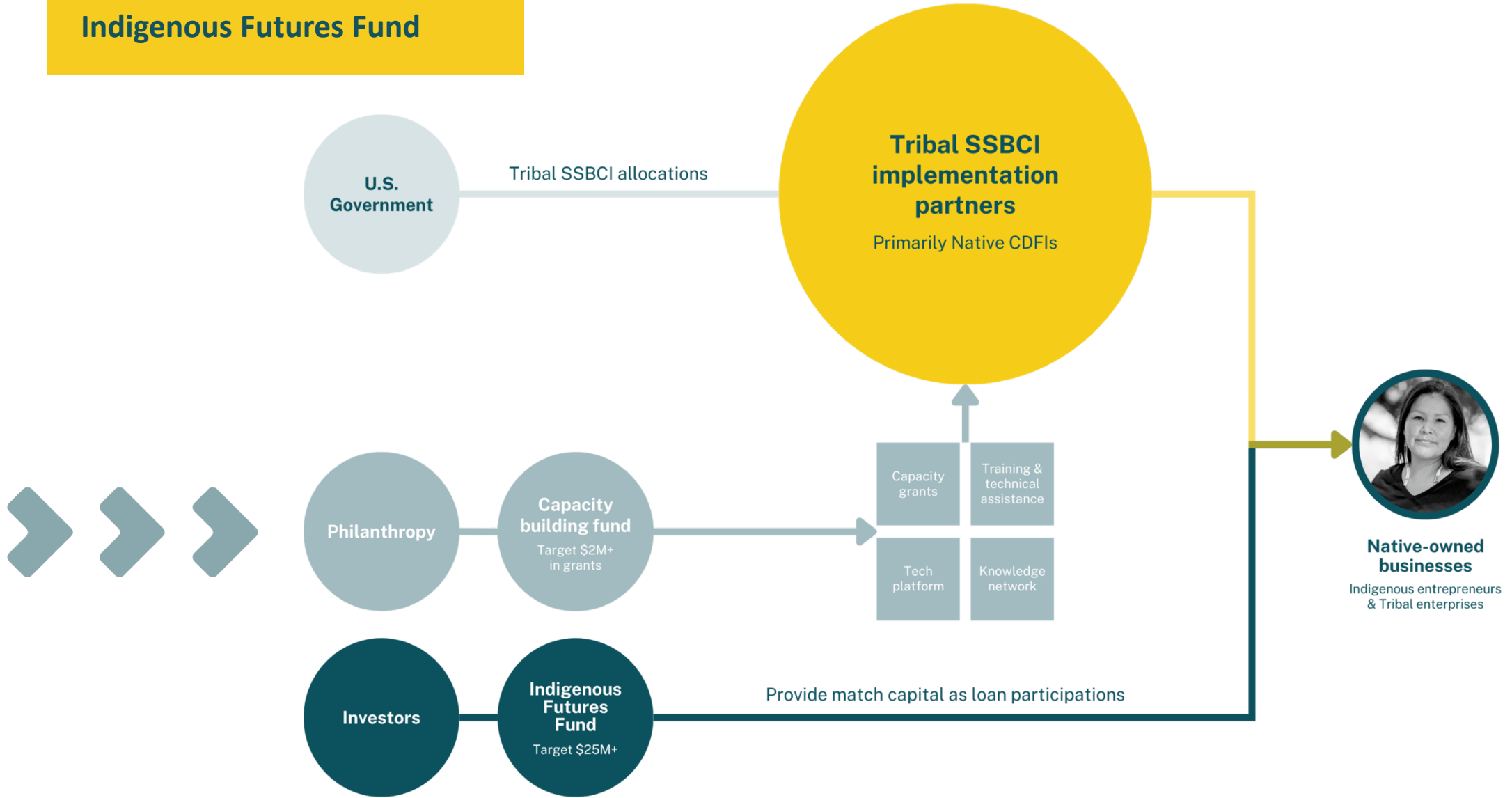
Philanthropy can combat harmful myths that limit access to opportunity for Tribes and Native people

Reduce & disprove perceptions of risk

- Build capital – provide the runway to establish new and sustainable models
- Catalytic capital
 - First money
 - Junior position
 - Lower rate of return
- Patient capital – commit to the long haul
- Guarantees



Our solution: Indigenous Futures Fund



9th Annual Native CDFI



Capital Access Convening

Let's capture and channel this watershed moment of federal resources for Indian Country



9th Annual Native CDFI



Capital Access Convening

Special Thanks to Our Sponsors



FHLBank
Chicago

Kaiser Permanente
Fund at East Bay
Community Foundation



BMO



Margaret A. Cargill
PHILANTHROPIES

AMERICAN BANK

Tamalpais Trust
Fund of RSF
Social Finance



9th Annual Native CDFI



Capital Access Convening