

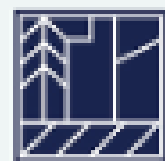


# Desert Blooms: Nourishing Future Abundance Through Investment

Shaping Stories,  
Transforming Systems:  
A Panel on Narrative  
Change and  
Navigating Systems of  
Power



Mountain | Plains  
Regional Native  
CDFI Coalition



FHLBank  
Chicago

BMO



Sponsored by:

Kaiser Permanente  
Fund at East Bay  
Community Foundation



Margaret A. Cargill  
PHILANTHROPIES



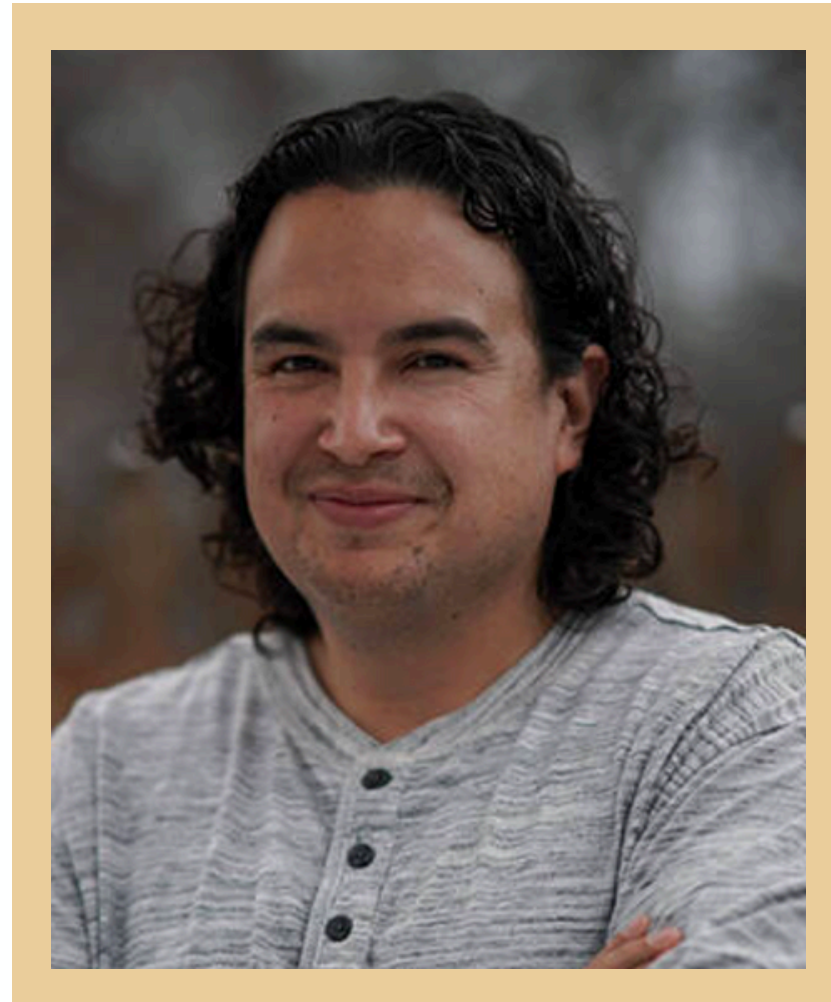
Tamalpais Trust  
Fund of RSF  
Social Finance



# Presenters | The Mountain | Plains Regional Native CDFI Coalition and U.S Economic Development Administration (EDA)



**Lakota Vogel**  
Executive Director  
Four Bands Community  
Fund



**Tommy Robinson**  
Regional Revolving Loan  
Fund Manager  
Four Bands Community  
Fund



**Matt Knutson**  
Deputy RLF Coordinator  
Economic Development  
Administration



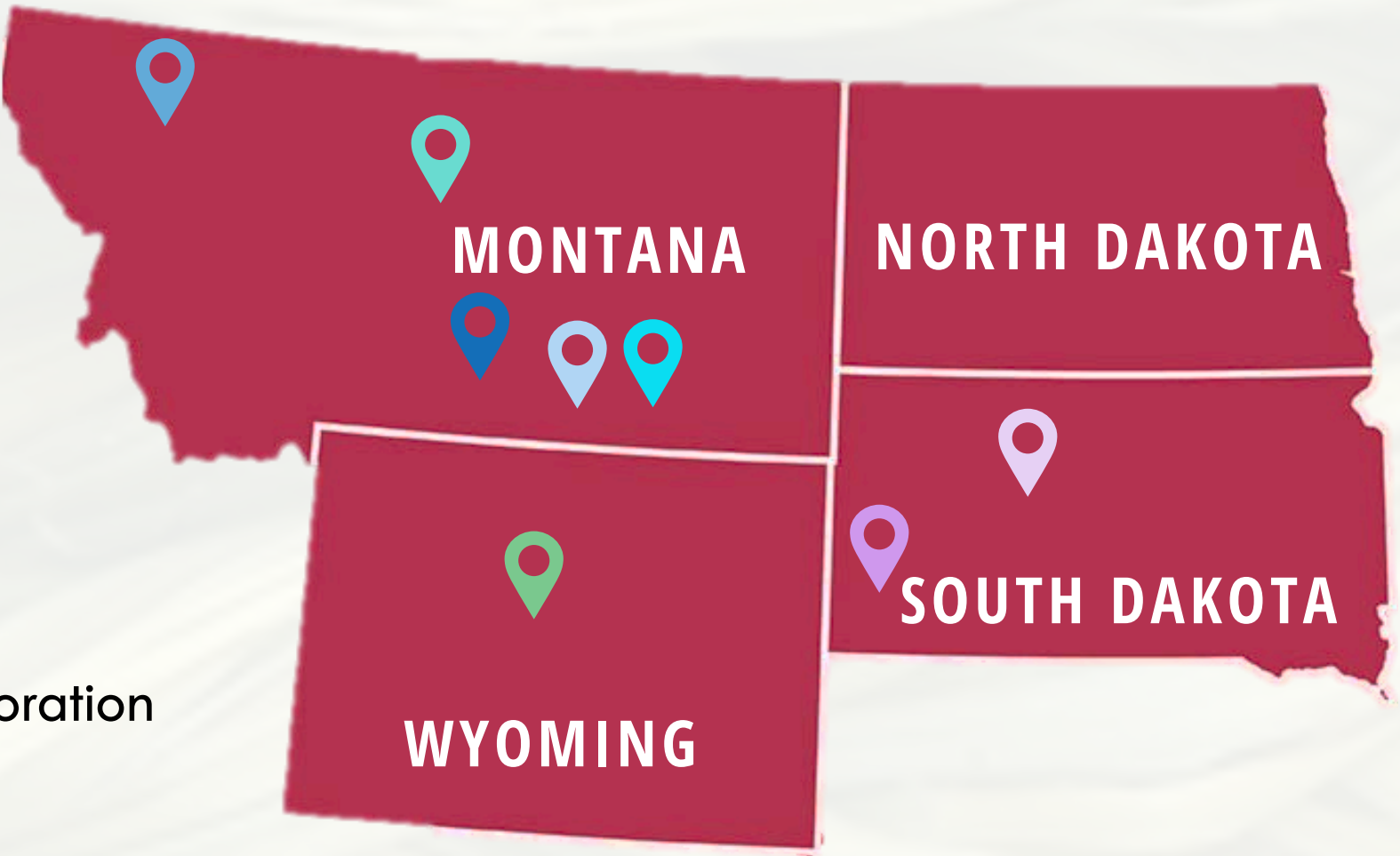
**Jael Kampfe**  
President  
Indigenous Impact Co.  
RECO for Mountain | Plains  
Regional Native CDFI Coalition




# Location and Members | The Mountain | Plains Regional Native CDFI Coalition

## Montana

-  Browing, MT  
NACDC Financial Services, Inc.  
Angie Main  
angiem@3rivers.net
-  Hays, MT  
Montana Native Growth Fund  
Kerry Shabi  
kerry@nativegrowth.org
-  Billings, MT  
Native American Development Corporation  
Sue Taylor  
staylor@nadc-nabn.org
-  Crow Agency, MT  
Plenty Doors CDC  
Charlene Johnson  
Cfjohnson@plentydoorscdc.onmicrosoft.com
-  Lame Deer, MT  
The People's Partners for Community Development  
Sharon Small  
sksmall@hotmail.com



## Wyoming

-  Fort Washakie, WY  
Wind River Development Fund  
Paul Huberty  
paul@wrdf.org

## South Dakota

-  Eagle Butte, SD  
Four Bands Community Fund  
Lakota Vogel  
lakota@fourbands.org
-  Eagle Butte, SD  
Akiptan, Inc.  
Skya Ducheneaux  
skya@akiptan.org
-  Rapid City, SD  
Black Hills Community Loan Fund, Inc.  
Barbara Schmitt  
barbaras@bhclf.org

## Other

- Mountain Plains CDC  
Eric Swack  
eric@mountainplainscdc.org

For more information, please visit: [MountainPlainsCoalition.org](https://MountainPlainsCoalition.org)



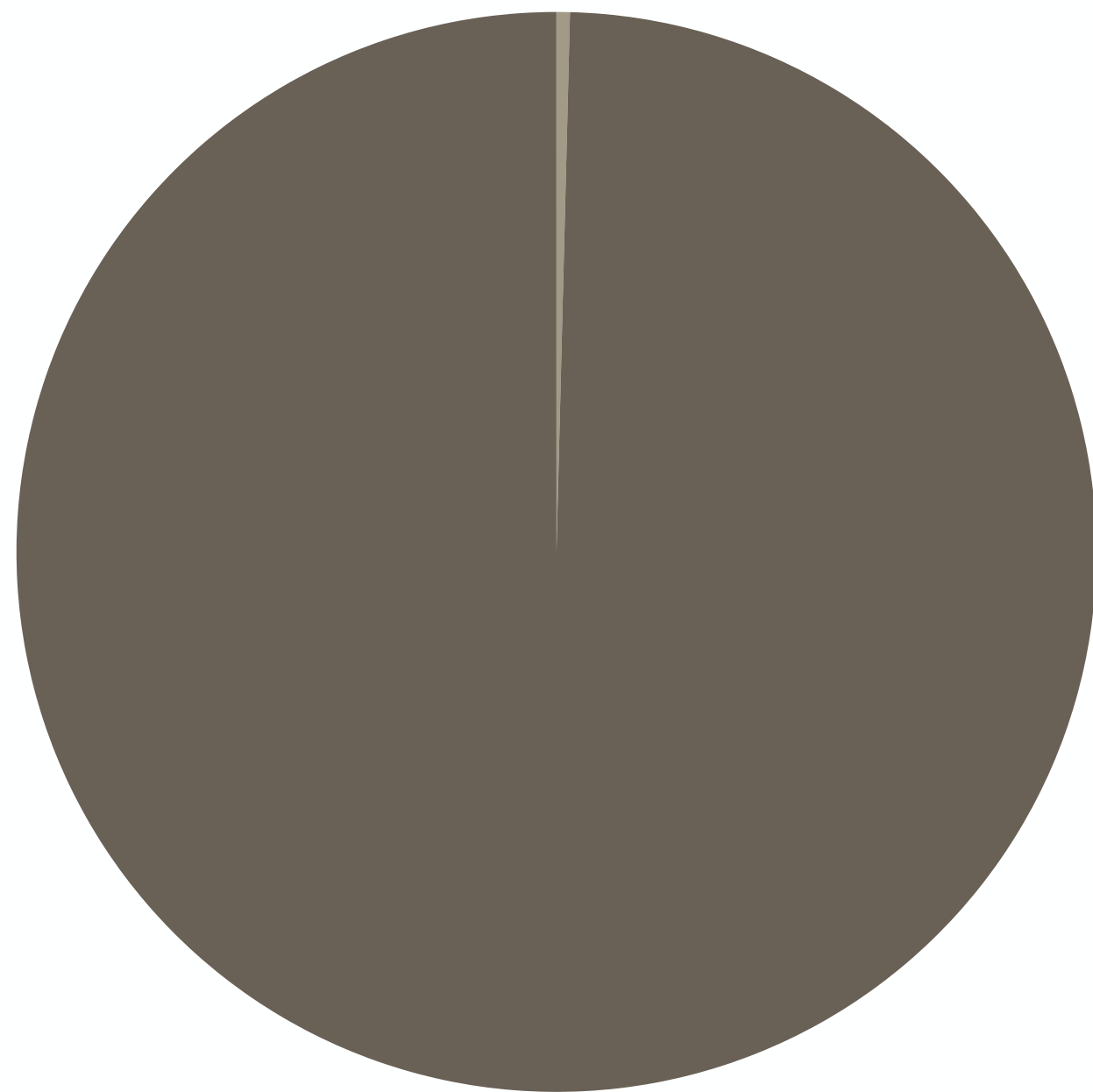
# A Broken System | Native communities have been left behind

Systemic barriers prevent Native access to capital resulting in persistent poverty.

## Annual Private Funding 2002-2006

Native led non-profits    Other non-profits

Native led non-profits  
0.4%



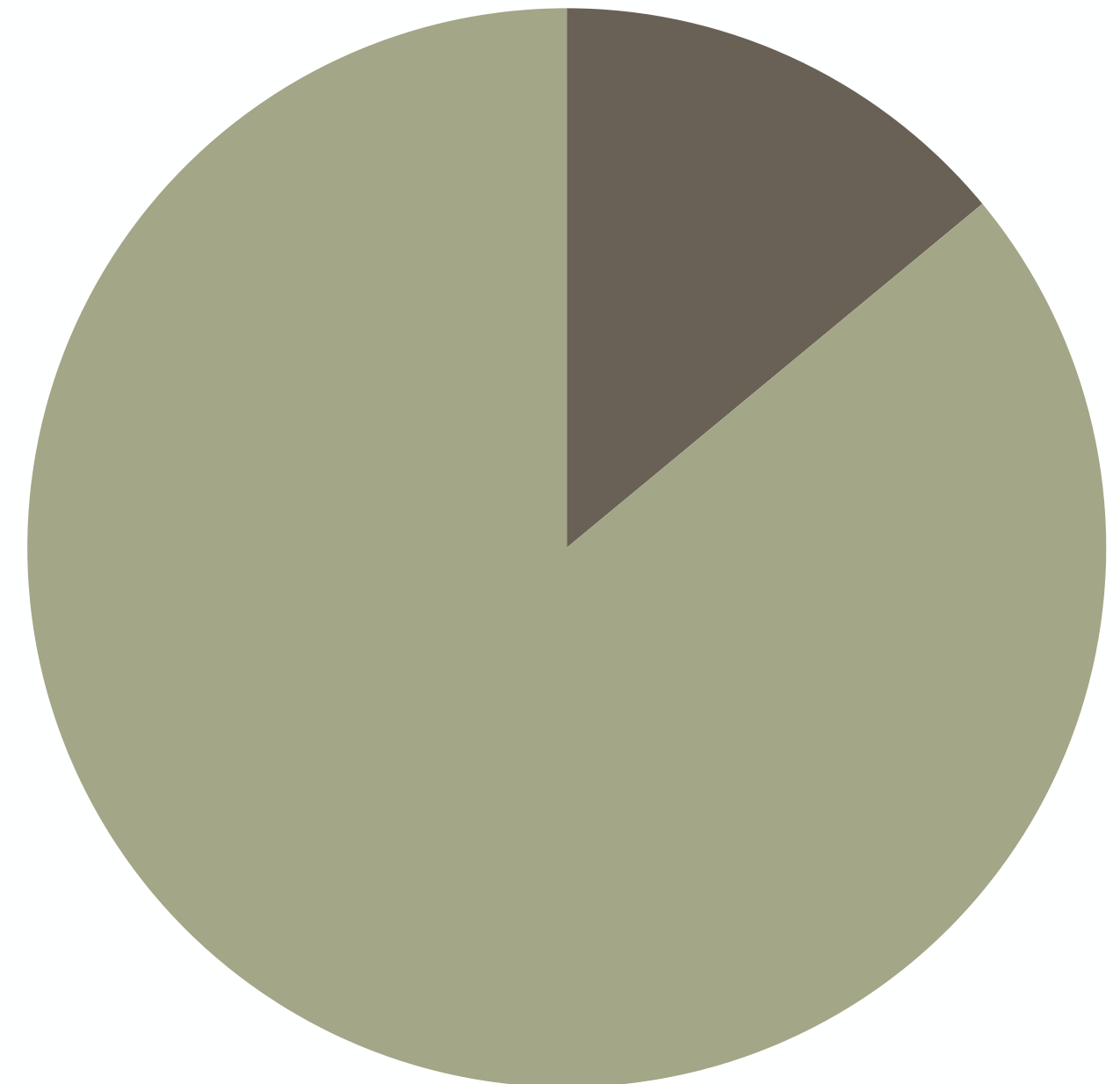
Other non-profits  
99.6%



## Reservations with Financial Institutions

Financial Institutions within Boundaries    No Financial Institutions

Financial Institutions within Boundaries  
14%



No Financial Institutions  
86%

# Values & Culture | A new economic system fueled by Indigenous values & culture

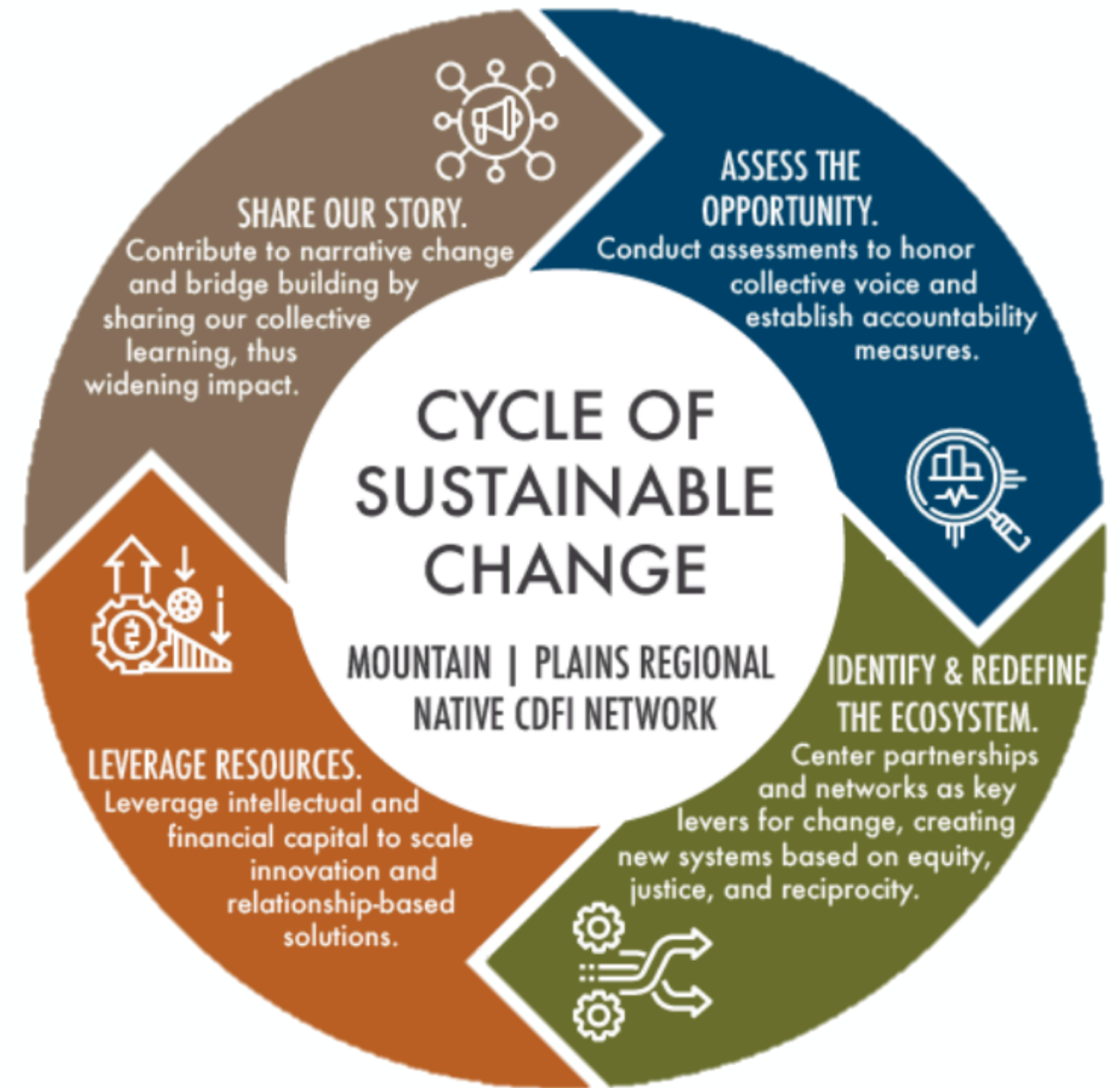
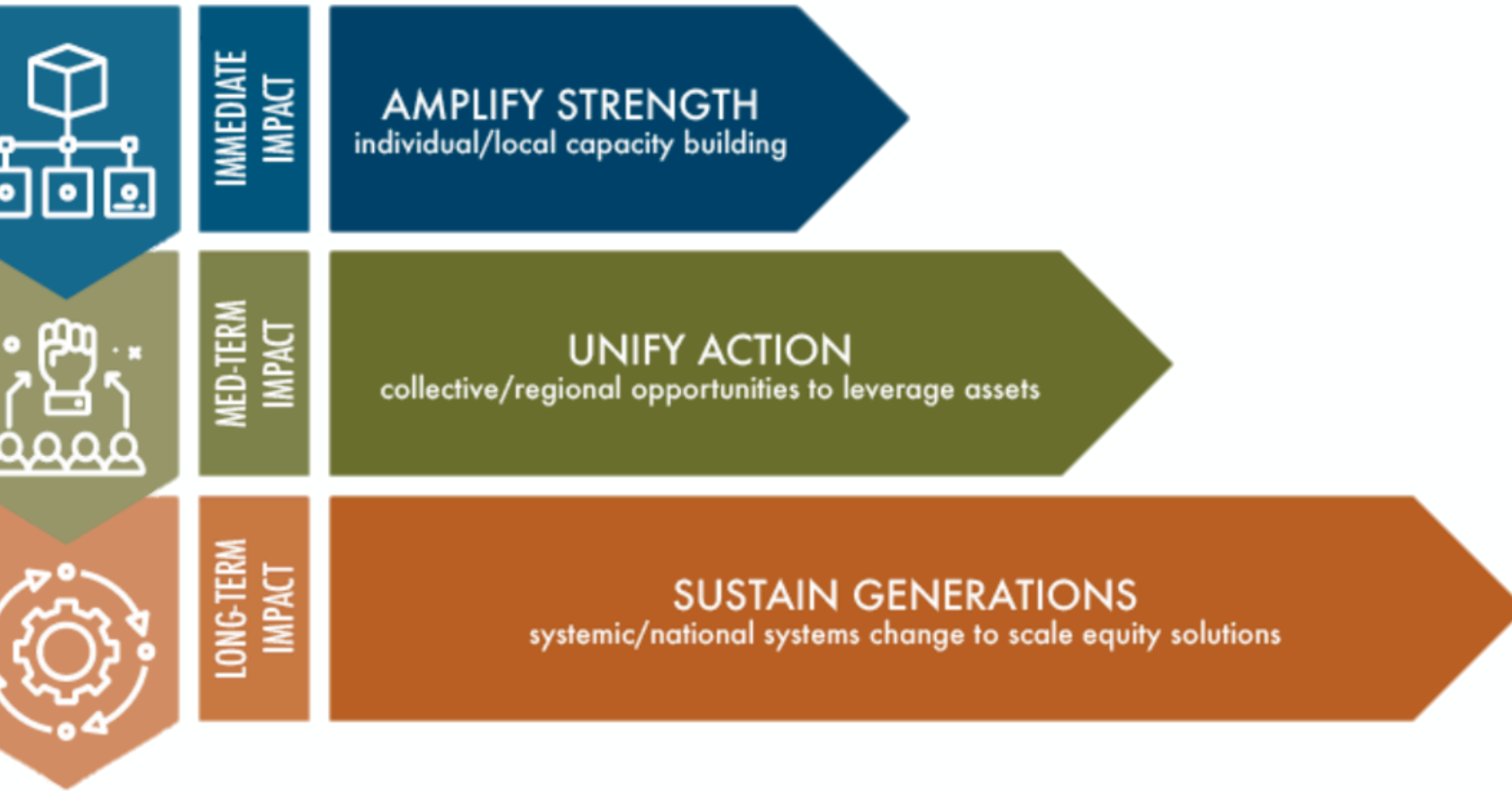
**Native Community Development Financial Institutions (CDFIs) emphasize holistic, relationship-based solutions grounded in Indigenous values and culture.**

THE MOUNTAIN | PLAINS REGION NATIVE VALUES

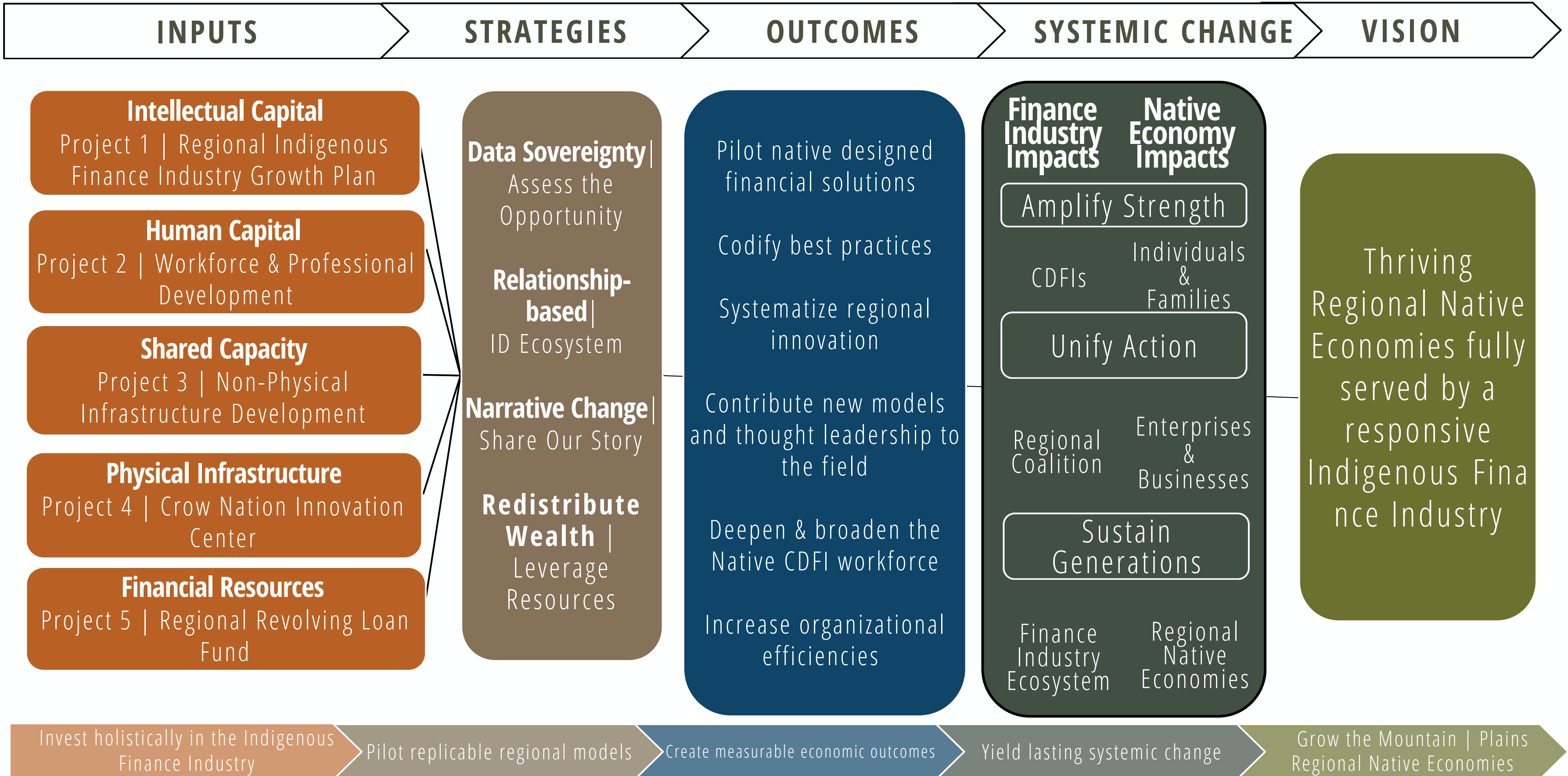


# The Solution | Native CDFIs are tackling systemic barriers

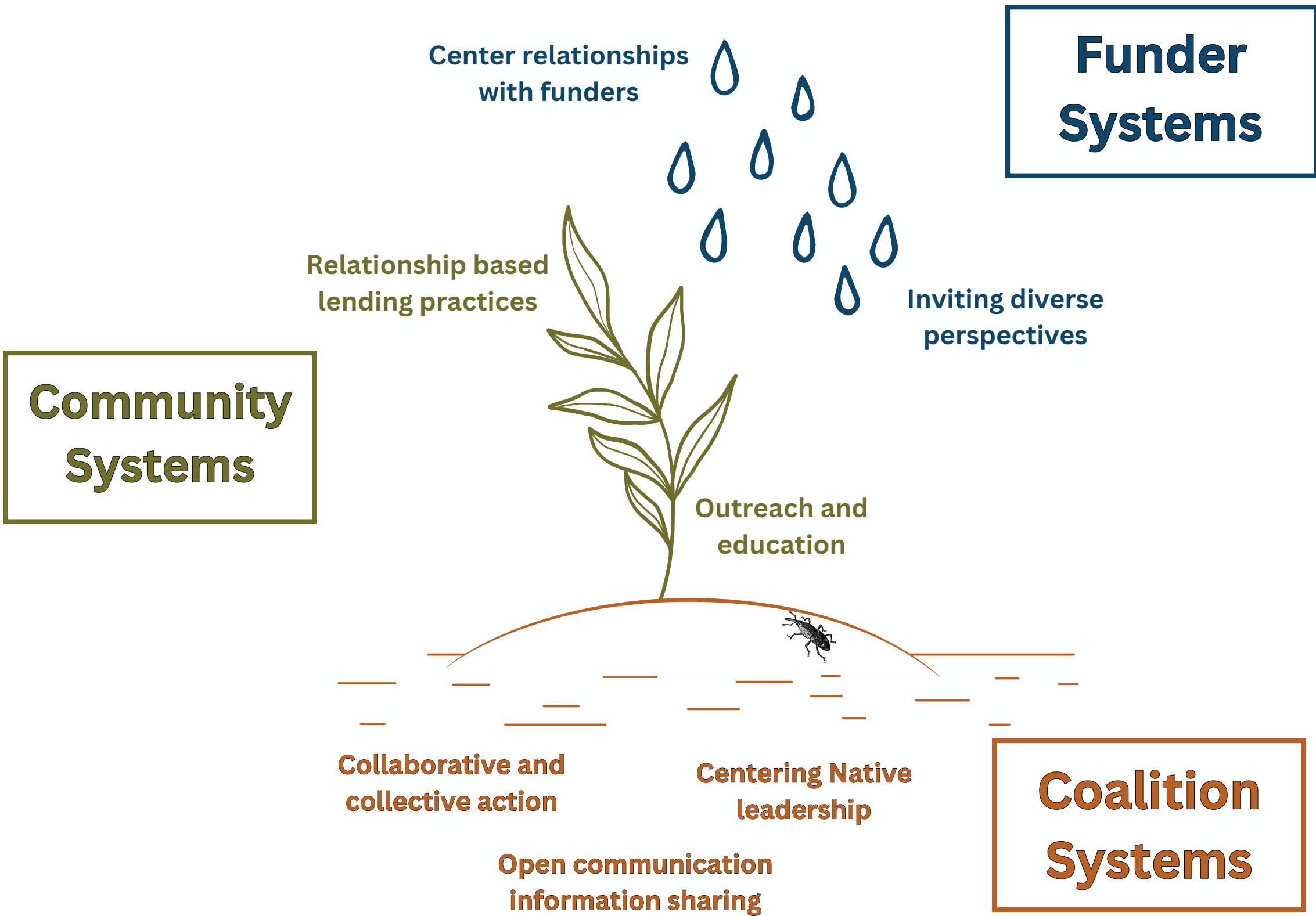
Native CDFIs are integrating Native values & culture into systems, strategies, and practices.



# The Vision | Systemic change promoting equity



# Nurturing a Balanced Ecosystem | The Mountain | Plains Regional Native CDFI Coalition

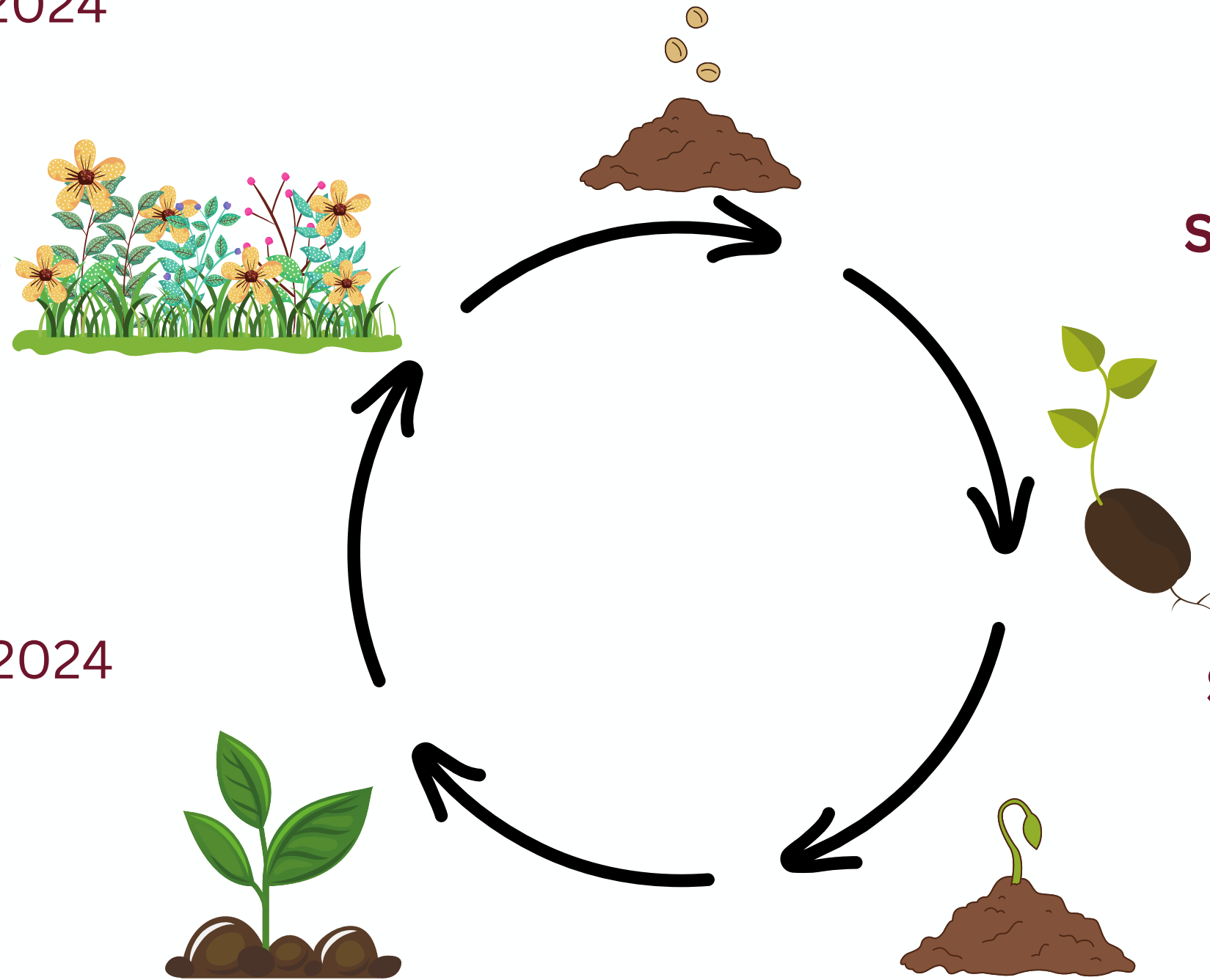


Shared values & cultural agreements become tools to tend this garden, increasing the final harvest. When outcomes (the harvest) are regenerative, the soil will be replenished, next year's seeds set aside, and a product shared that feeds the ecosystem.



## Planting Seeds | December 2022

- A **partnership begins** between the Coalition and EDA



## Seeds Take Root | February 2023

- **Modeled accountability** to statistical under representation
- **Committed** to sharing responsibility for solutions

## Seeds Grow | August 2023

- **Launched the first Indigenous** focused TOP
- Were **one of four** TOP Tech Teams

## Many Strong Plants | April 2024

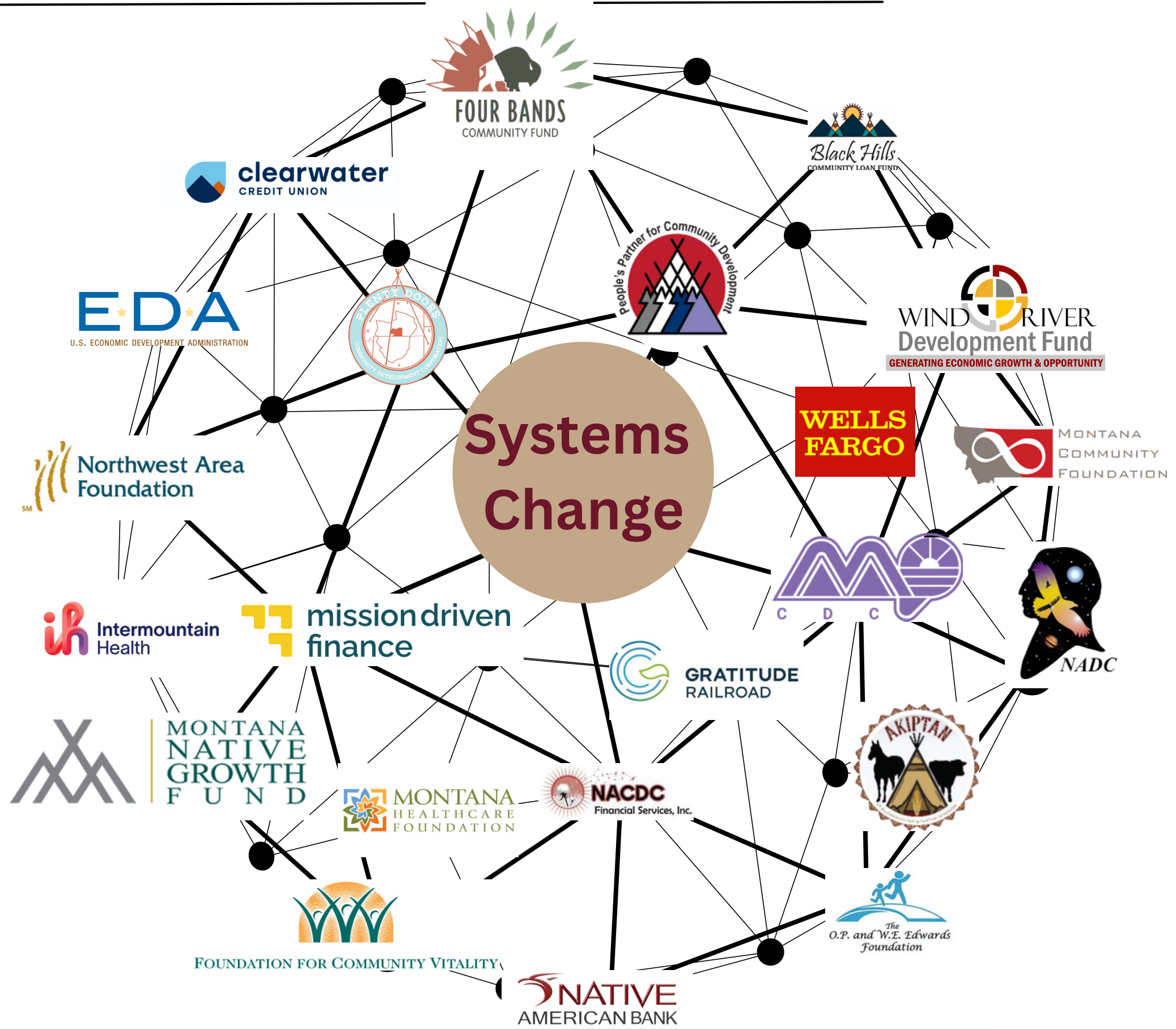
- TOP is **replicating a second Indigenous** focused launch
- An **RLF Equity Cohort** was launched to **increase lending** to Natives

## A Plant Emerges | January 2024

- **Impacts** of the TOP sprint
  - **4** Tech Teams
  - **25** User Advocates
  - **3** product users
  - **1600** views online

# Growing Relationships | The Mountain | Plains Regional Native CDFI Coalition

The ecosystem fueling the Mountain | Plains Indigenous Finance Industry is **over 111** engaged allies and Native leaders.



# Growing Relationships | The Mountain | Plains Regional Native CDFI Coalition Ecosystem

Behind each organization are people who are part of systems change. Behind each leader are staff and all the relationships they carry and nurture .



## Purpose Statement

TO COURAGEOUSLY IMPART OUR AUTHENTIC REPRESENTATION

### Courage

Courage is how we carve out space to be our authentic selves, it can feel adversarial because it is **“being ready and willing to face negative situations”** (Shalyn), but more is possible with courage. We have and will face adversity with our hearts full, and our peers at our back



### Impart

Impart is to **“communicate knowledge”** (Tommy) and **“share wisdom”** (Ginna). It grounds us in our own responsibility to teach, but to do so from a place of humble knowing.

### Authentic representation

Authentic Representation is a **“reflection of one's values and culture”** (Shalyn) through an accurate portrayal of one's self. It reclaims the narrative for and by us and on our own terms.

### Our

Our is inclusive, it **“represents our communities”** (Shalyn), both the Indigenous and the not. It centers belonging and ownership with our selves and those we serve.

## Core Vulnerability

**Maintain** is our state of being, to **“move forward in a positive way”** (Ginna). Narrative change takes place **“over many years of advocacy”** and without maintenance **“impact falls short”** (Laraya).

**Stamina** is consistent, and **“vital to continue this valuable work”** (Laura). **“Stamina can only last so long”** (Leona), and thus we we must have the courage to ask for help.



**“Advocacy is central to narrative change”** (Laraya), and the specific actions we take for narrative change. Advocacy must be done authentically and requires our energy over a long period of time



# Contact | The Mountain | Plains Regional Native CDFI Coalition

---



**Lakota Vogel | Executive Director**  
lakota@fourbands.org

**Jael Kampfe | President**  
Jael@IndigenousImpact.Co  
406-671-9209

**Matt Knutson | Deputy RLF Coordinator**  
mknutson@eda.gov

**Tommy Robinson | Regional RLF  
Manager**  
tommy@fourbands.org

# Special Thanks to Our Sponsors



**Kaiser Permanente  
Fund at East Bay  
Community Foundation**



**Margaret A. Cargill**  
PHILANTHROPIES

**Tamalpais Trust  
Fund of RSF  
Social Finance**

